

USAGE PRECAUTIONS

Please read the warning and cautions carefully before using this appliance and comply strictly for your own safety and to prevent the damage that may occur on your property.

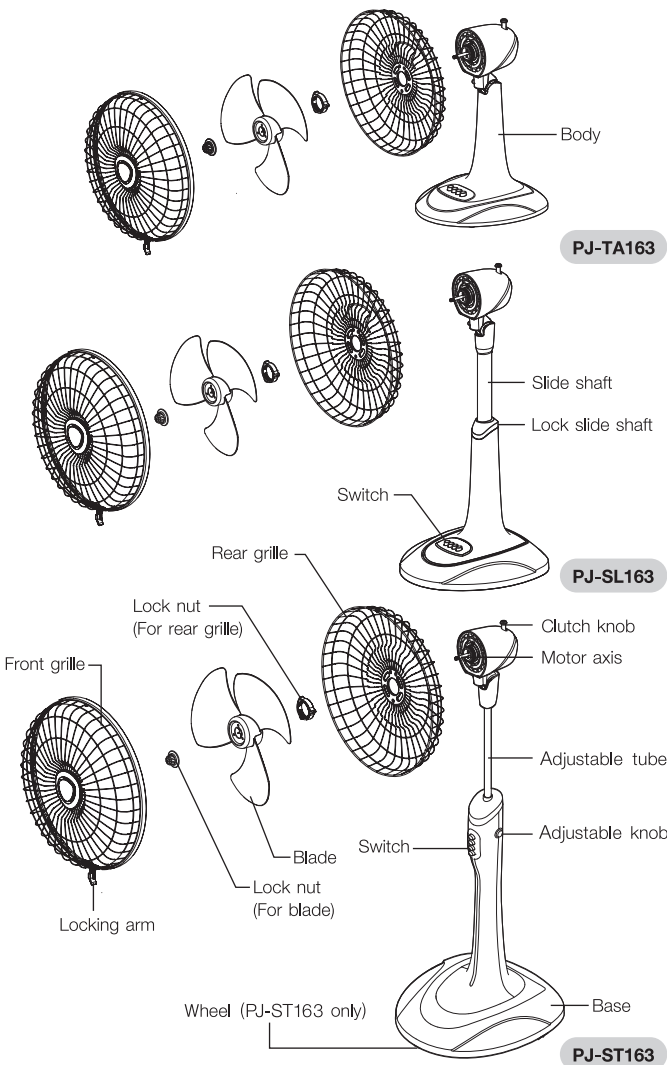
WARNING

- 1 If the electric fan is wrong operating, never repair by yourself. For safety and efficient use, contact your nearest service center approved by SHARP.
- 2 In case the power cord is broken, it must be replaced by SHARP service center to avoid any damages.
- 3 Unplug every time before start to clean the parts or when you do not use the electric fan anymore.
- 4 Do not immerse the electric fan in water or sprinkling water because this could lead to a short circuit or equipments broken.
- 5 Do not insert the finger or any objects through the grille while the blade is rotating.
- 6 Do not spray any vapor or chemicals to the electric fan while the blade is rotating.
- 7 Do not use the electric fan with incomplete or broken parts such as grille or blade, as it may cause injury.

CAUTIONS

- 1 Plug in tightly in order to avoid the plug to be overheated. This can cause the plastic to be melted, and conflagrated. When unplugging, hold only the plug part; do not pull the cable as this may cause the cable broken.
- 2 Never connect the plug with your wet hand as it may be dangerous from electric leakage.
- 3 Never share the wall outlet with other appliances.
- 4 Should not use the electric fan close to curtain, mosquito net or any objects which could be pulled to the motor, otherwise this may cause accident and damage.
- 5 Should not use the electric fan at the high temperature place such as placing it close to the stove or the high humidity place, as the unit might be damaged.
- 6 Should not place the electric fan on the hot or sloped floor, as the unit might be damaged.

DESCRIPTION OF PARTS



SPECIFIC INFORMATION

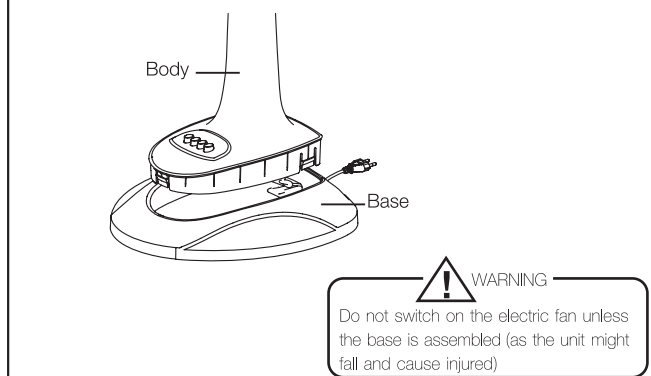
| MODEL | PJ-TA163 | PJ-SL163 | PJ-ST163 |
|-------------------------------------|-------------|-------------------|---------------------|
| Blade (mm.) | | 400 | |
| Rated voltage (V) | | 220 | |
| Rated frequency (Hz) | | 50 | |
| Power consumption (W) | | 45 | |
| Rated current (A) | | 0.21 | |
| Insulation class | | B | |
| Outside dimension (W x H x D) (mm.) | 464x692x356 | 464x875-1,075x420 | 464x1,266-1,466x456 |
| Weight (kg) | 3.5 | 4.3 | 6.3 |

*Detail is subject to change without prior notice.

ASSEMBLING THE ELETRIC FAN

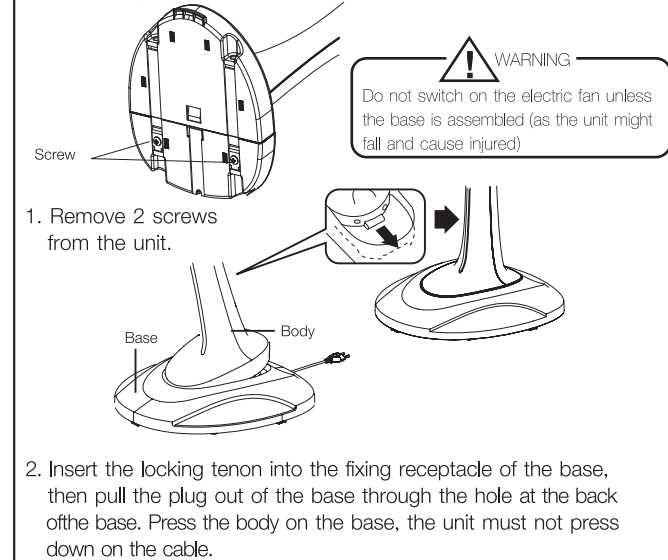
Installation the body onto the base.

MODEL PJ-SL163

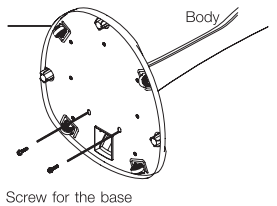


Thread the cord through the back and press the safety lock to the fan base,

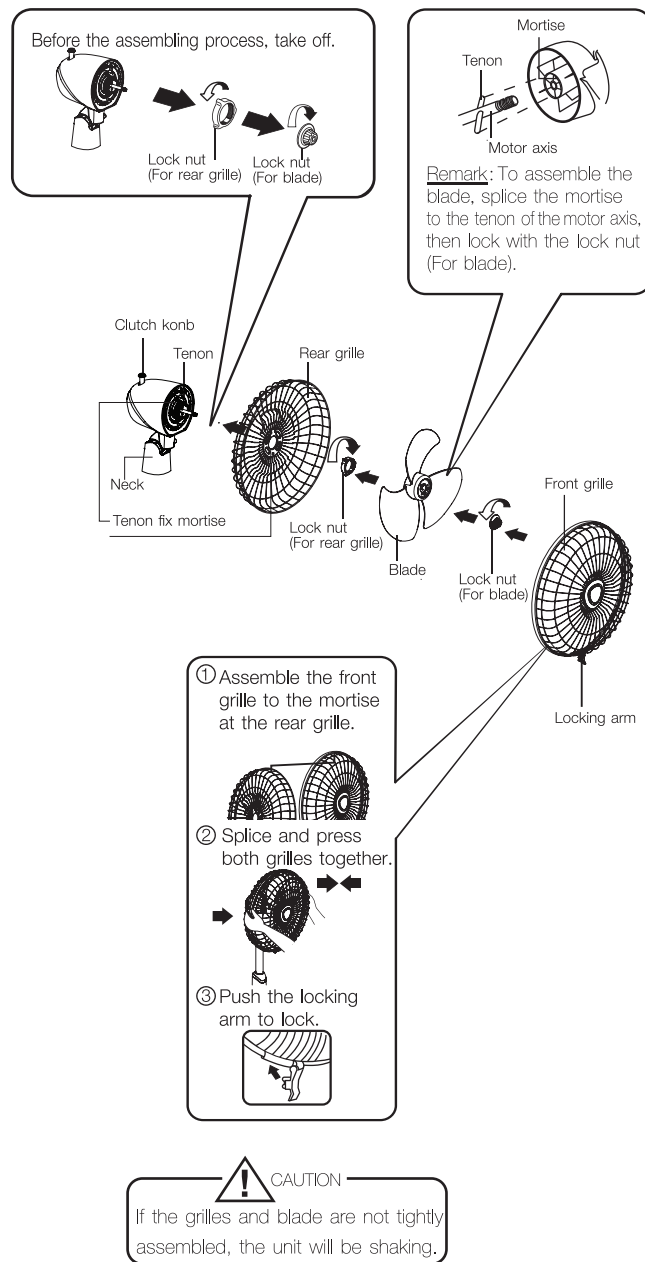
MODEL PJ-ST163



3. Connect the body to the base and tighten 2 screws.



BLADE AND GRILLE ASSEMBLING PROCESS

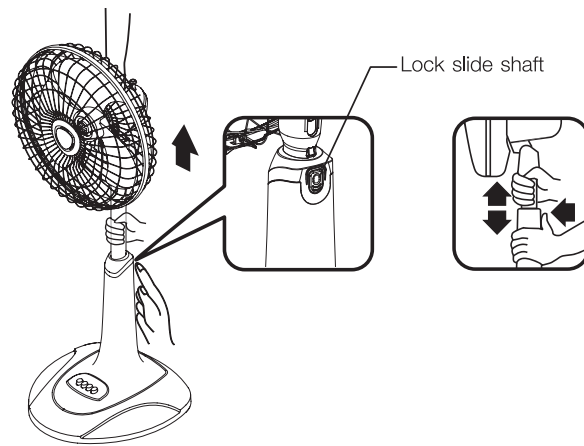


CAUTION
If the grilles and blade are not tightly assembled, the unit will be shaking.

HEIGHT ADJUSTMENT

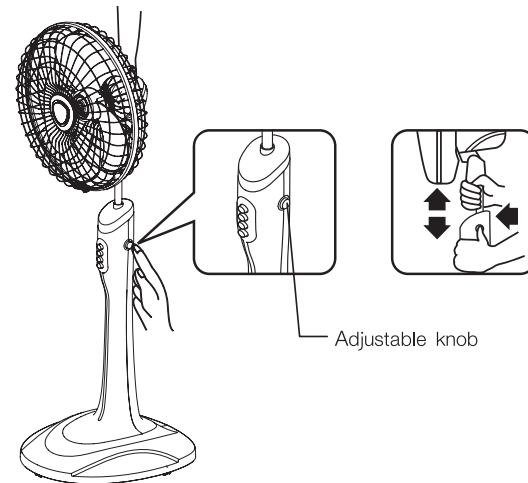
MODEL PJ-SL163 The height can be adjusted to 5 levels

- Level up by press and hold the lock slide shaft and at the same time, lift the motor unit or slide shaft up.
- Level down by push the motor unit or slide shaft down.



MODEL PJ-ST163

- Level up by press and hold the adjustable knob and at the same time, lift the motor unit or adjustable tube up.
- Level down by press and hold the adjustable knob and at the same time, push the motor unit or adjustable tube down.



WARNING : Do not press down while not assembled the grille.

USE INDICATION

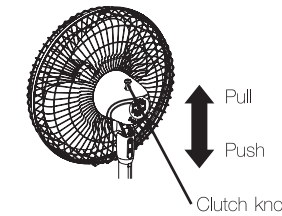
Be sure that the rated voltage is 220V only before use.

- Plug in tightly.
- Push the switch for the desired fan speed.

| SWITCH | WIND LEVELS |
|--------|----------------|
| 0 | Stop operation |
| 1 | Light wind |
| 2 | Medium wind |
| 3 | Heavy wind |

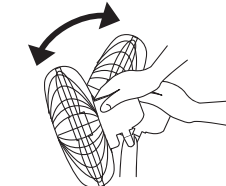
Swing control

- Push the knob : the unit swings left and right.
- Pull the knob : the unit stop swinging.



Swing direction

Press or push the motor unit up or down.



CLEANING AND MAINTENANCE

Unplug every time before start to clean the part.

Blade, front grille and rear grille

- Dissemble, and wipe with damp cloth use cleaning agent mixed with water then dried up with the cloth.

Body

- Wipe with damp cloth using water or mild soapy liquid.

Remark

- Do not wet electric parts or motor.
- Do not clean with chemical substance, thinner and kerosene etc, as this might damage the surface and shape of unit.

Sole Distributor in Thailand

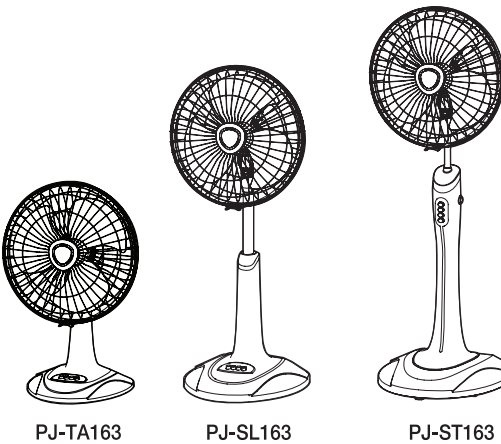


THAI CITY ELECTRIC CO., LTD.
164/3-4 New Petchburi Rd., Makasani, Ratchathewi, Bangkok 10400
Tel. 0 2333 3111 Call Center 0 2254 5000
E-mail : callcenter@thacity.co.th

คิดบวก ทำบวก
เพื่อเด็กฯ และสังคมไทย
WWW.THACITY4SOCIAL.COM

www.thacity.co.th
www.sharp-weecub.com
www.facebook.com/sharpweecub

SHARP OPERATION MANUAL



ELECTRIC FAN MODEL PJ-TA163 PJ-SL163 PJ-ST163

| CONTENTS | PAGE |
|-----------------------------|------|
| USAGE PRECAUTIONS | 8 |
| DESCRIPTION OF PARTS | 9 |
| SPECIFIC INFORMATION | 9 |
| ASSEMBLING THE ELECTRIC FAN | 10 |
| BLADE AND GRILLE | 11 |
| ASSEMBLING PROCESS | 11 |
| HEIGHT ADJUSTMENT | 12 |
| USE INDICATION | 13 |
| CLEANING AND MAINTENANCE | 13 |

Please see the date of manufacture marked on the product
Thank you for your trust in products of Thai City Electric Co., Ltd.
In order to use electric fan in efficiency way. Please read the instructions manual carefully before using this appliance.

REV.3-2561