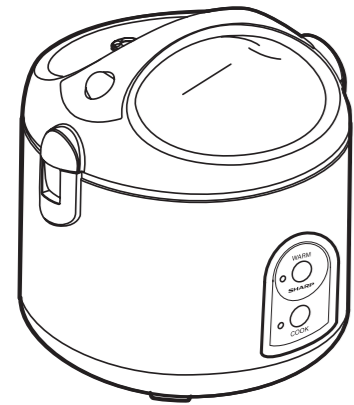


# SHARP

## OPERATION MANUAL



### ELECTRIC JAR RICE COOKER

I-POT SERIES “S”  
MODEL KS-R11ST  
KS-R19ST  
KS-R23ST

I-POT SERIES “E”  
MODEL KS-11E  
KS-11ET  
KS-19E  
KS-19ET  
KS-23E

CONTENTS	PAGE
USAGE PRECAUTIONS	10
DESCRIPTION OF PARTS	11
SPECIFIC INFORMATION	12
HOW TO USE	12-13
HOW TO STEAM FOOD (USING THE STEAM RACK)	14
EARTH WIRE ASSEMBLY	15
CLEANING AND MAINTENANCE	16

Please see the date of manufacture marked on the product  
Thank you for your trust in products of Thai City Electric Co., Ltd.  
In order to use electric jar rice cooker in efficiency way. Please  
read the instructions manual carefully before using this appliance.

REV.1-2560

## USAGE PRECAUTIONS

Please read the warning and cautions carefully before using this appliance and comply strictly for your own safety and to prevent the damage that may occur on your property.

- The appliance is to be supplied through a residual current device(RCD) having a rated residual operating current not exceeding 30 mA.
- This appliance is considered to be suitable for use in countries having a warm damp equable climate. It may also be used in other countries.

### WARNING

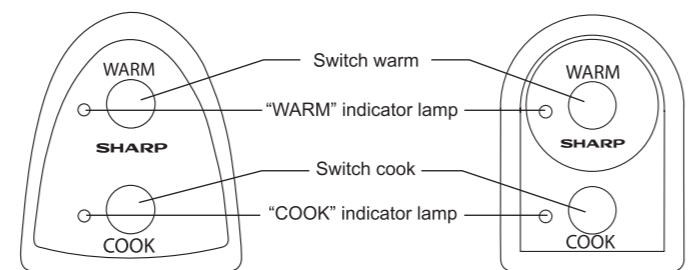
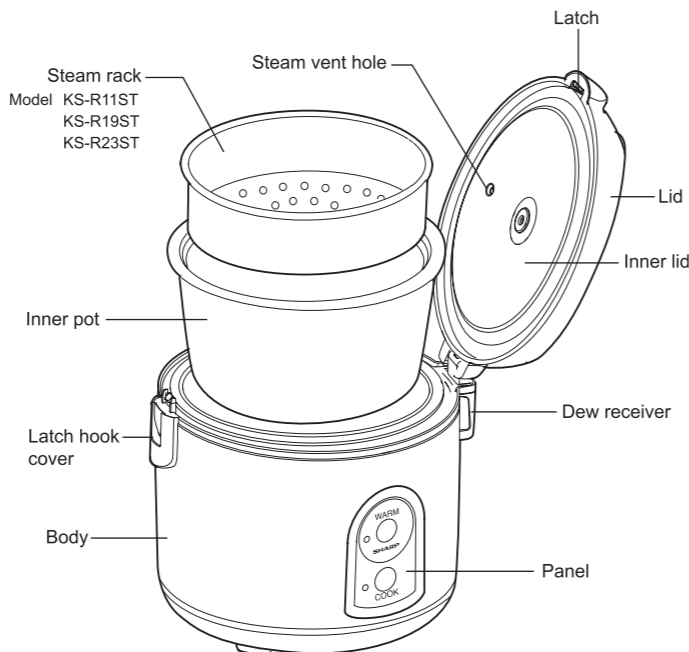
- Do not immerse the set in water or sprinkling water on the heater plate.
- Do not use the cooker on a wet floor, under direct sunlight or near the gas stove.
- While cooking, do not put the rice cooker on or near combustible materials such as curtains or vinyl carpets.
- During or immediately after cooking, the areas near the steam vent hole are kept at high temperature. Do not touch those areas to avoid burns.
- Do not place a wiping cloth or the like on the lid or the handle during use.
- Never connect the plug with your wet hand as it may be dangerous from electric leakage. Disconnect the plug from the wall outlet when you do not use the rice cooker.
- Do not use any other inner pot except the provided one.
- Keep the rice cooker out of the children's reach, especially when cooking rice.
- Never share the wall outlet with other appliances.
- Do not opening the lid when during boiling because touched hot steam.
- Do not disassemble or repair the cooker by yourself. It may cause trouble such as a fire or electric shock. Consult your nearest dealer.
- In case the power cord is broken, it must be replaced by manufacturer or appointed service providers or equivalent professionals to avoid any damages.

### CAUTIONS

- Insert the plug into the wall outlet firmly and when disconnecting, hold the plug and pull it out without touching the power cord.
- Do not give strong vibration or impact during cooking. It may cause an irregular operation of thermostat to lead to poor rice-cooking.
- Do not use the inner pot with other heating appliances such as a gas stove. The inner pot may be transformed and it may cause poor cooking result.
- Do not use metal spoon that can scratch the inner pot.
- Always keep clean the flange part and the bottom of the inner pot, the heater plate and the inner lid, etc. so that they do not accumulate rice grain or foreign matter.

10

## DESCRIPTION OF PARTS



MODEL KS-11E  
KS-11ET  
KS-19E  
KS-19ET  
KS-23E

MODEL KS-R11ST  
KS-R19ST  
KS-R23ST

11

## SPECIFIC INFORMATION

MODEL		KS-R11ST	KS-R19ST	KS-R23ST	KS-11E KS-11ET	KS-19E KS-19ET	KS-23E
Rated voltage (V)		220					
Rated frequency (Hz)		50					
Power consumption (W)	Cook	485	600	800	485	600	800
	Warm	Max.	60	60	62	27	30
		Average	27	28		-	
Capacity (ℓ)		0.18-1.0	0.54-1.8	0.72-2.2	0.18-1.0	0.54-1.8	0.72-2.2
Outside dimension (mm.)	W	269	299		269	299	
	H	280	300	324	280	300	324
	D	255	287		255	287	
Weight (kg)		2.7	3.2	3.5	2.4	3.0	3.4
Safety system		Thermal fuse					

Accessories :

- Measuring cup and plastic spoon for model : KS-R11ST, KS-11ET, KS-R19ST, KS-19ET, KS-R23ST.
- Steam rack for model : KS-R11ST, KS-R19ST, KS-R23ST.

\* Detail is subject to change without prior notice.

## HOW TO USE

Be sure that the rated voltage is 220V only before use.

- Measure the volume of rice correctly.  
(The volume of the attached measuring cup is about 0.18 ℓ or 180 cc.)

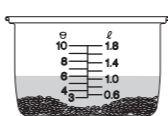


- Wash the rice in a separate bowl, put the rice into the inner pot and add water.

- Place rinsed rice into the inner pot and pour water at its level.

**Example** (For 1.8 ℓ)

- To cook 6 cups rice, pour water to level of 6.



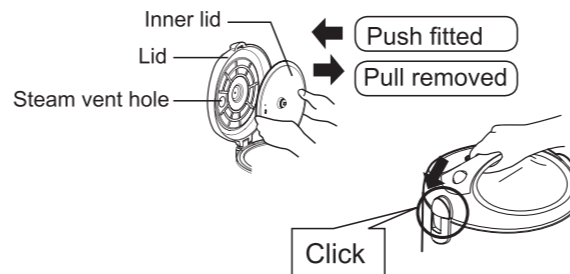
12

- Place the inner pot on the heater plate correctly by turning it slightly from left and right.

### Note

- Before putting in, wipe off the moisture, dirt or rice grains on the outside of the inner pot or surface the heater plate.

- Insert the steam tube of the inner lid into the steam vent hole of the lid cover. Close the lid firmly.



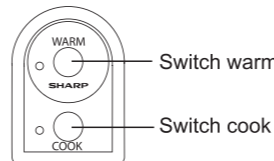
- Pull out the plug and insert the plug into the wall outlet. Do not overdraw beyond the red mark.

### Retracting

- Pull the plug out a little and it automatically reels in.



- Push the switch cook.  
**Note**
  - When cooking is over, the “COOK” indicator lamp goes off and then the “WARM” indicator lamp lights on to start steaming. Keep on steaming without opening the lid for about 10-15 minutes for tastier and softer rice.



- Do not leave the plastic spoon in the inner pot.



- Disconnect the plug from the wall outlet every time after use.

13

## HOW TO STEAM FOOD (Using the steam rack)

For model KS-R11ST, KS-R19ST, KS-R23ST

- Put water into the inner pot. (The water level may need adjustment depending on capacity and the food).
- Place the steam rack on the inner pot.
- Place foods you required on top of the steam rack and place the inner pot into the cooker. (Wipe the outside of the inner pot to remove extra substance before placing the inner pot into the body).
- Close the lid. The lid is locked firmly when it clicks. (If the lid is not closed firmly or opened when steaming, it may affected to the food quality).
- Connect the plug to the outlet, the “WARM” lamp lights on. Then, push the switch cook. The “COOK” lamp lights on instead.  
**Caution**  
Do not connect the plug before placing the inner pot in the cooker, it may damage the unit and cause electric shock hazards.
- When the cooking has completed, the switch will pop up. The cooking lamp will turn off and keep warm lamp will lights to indicate the “WARM”. Disconnect the plug from the outlet and use the provided plastic spoon handle to remove the steam rack. Make sure to attach firmly and then pull the steam rack. (See illustration)

**Cooking with steam rack :**

- KS-R19ST, KS-R23ST  
The volume of rice maximum 5 cups (0.9 ℓ).
- KS-R11ST  
The volume of rice maximum 2 cups (0.4 ℓ).


### TIME OF STEAM FOOD

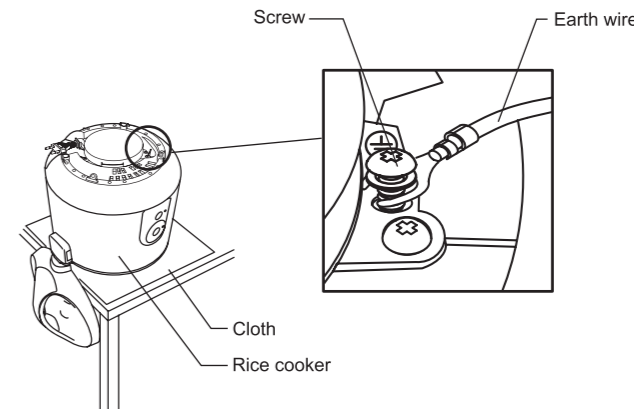
Water volume 1 cup = 180 cc.	Time (Approx.) min		
	KS-R11ST	KS-R19ST	KS-R23ST
1/2 cup	12	11	9
1 cup	22	19	16
2 cups	39	31	26
3 cups	57	49	37

SPECIFICATIONS OF STEAMER	KS-R11ST	KS-R19ST	KS-R23ST
Material	Polypropylene		
End user temperature (Max) °C	105		

14

## EARTH WIRE ASSEMBLY

- Unplug before assemble the earth wire.
- Remove the inner pot from the rice cooker.
- Upside down the rice cooker.
- Remove the screw for earth wire about 2-3 mm. (Symbol ) and insert earth wire ass'y and fasten screw for earth wire.



### SPECIFICATIONS

For model KS-R11ST, KS-R19ST, KS-R23ST

### Warming system

- The automatic warming system will start. The heat will be spreaded throughout the rice. The system will keep the rice temperature during 70-76°C that will make cooked rice warm and tasty.
- The steamer use all most.

For model KS-R11ST, KS-11ET, KS-R19ST, KS-19ET, KS-R23ST

- The inner pot with poly-flo-n coat.

All model safety with the thermal fuse system.

### Warming suggestion

For I-POT Series “E” (DELUXE) KS-11E, KS-11ET, KS-19E, KS-19ET, KS-23E when the cooking is over, the “COOK” indicator lamp goes off and then the “WARM” indicator lamp lights on to start steaming. Do not warm the more than 5 hours and disconnect the plug.

### Note

If the cooked rice is cold and needs warming, unfasten the rice and sprinkle some water on the rice, push switch cook and wait until “COOK” indicator lamp goes off, then the “WARM” indicator lamp lights on. Keep on warming rice to along time, time of warming begin to the volume of rice.

15

## CLEANING AND MAINTENANCE

After disconnecting the plug from the electric wall outlet and cooling down the cooker, start cleaning as shown below.

Parts to clean	How to clean	Caution
HEATER PLATE	Use the damp fine-sandpaper to clean the dirty area and wipe out with sponge or damp cloth, then wipe again with the dry cloth to remove the humidity.	Rice grains and dusts that attached on the heater plate cause the inefficiently operation of the heat spread between the inner pot and heater plate. This may cause the switch cook stop work before its time and rice is not yet done.
INNER POT	Soak inner pot, steam rack and inner lid in lukewarm water and wash with sponge, washing detergent or liquid detergent and then wipe dry cloth.	Using metal-brush or nylon-brush make the inner pot steam rack and inner lid surface scratchy and this cause the removal of coating substance and rice attached at the bottom of the inner pot.
STEAM RACK		
INNER LID		
BODY AND LID	Wash with sponge and wipe with cloth to dry it.	Do not use metal-brush to clean the body and lid because it will scratch the coating substance of the surface.
DEW RECEIVER	Take off the dew receiver, wash with sponge brush and wipe with cloth to dry it.	Always clean the dew receiver in order to protect the smell from the remaining materials.

Sole Distributor in Thailand

MANUFACTURED BY FEDERAL ELECTRIC CORP., LTD.  
64/1 Moo 4 Kingkaew Rd., Rajathavea, Bangplee, Samutprakarn 10540

THAI CITY ELECTRIC  
THAI CITY ELECTRIC CO., LTD.  
1643/4 New Petchburi Rd., Makasani, Ratchathewi, Bangkok 10400  
Tel. 0 2333 3111 Call Center 0 2254 5000  
E-mail : callcenter@thaicity.co.th

คิดบวก ทำบวก  
เพื่อเด็กฯ และสังคมไทย  
www.thaicity.co.th  
www.sharp-weclub.com  
www.facebook.com/sharpweclub

16