

USAGE PRECAUTIONS

Please read the warning and cautions carefully before using this appliance and comply strictly for your own safety and to prevent the damage that may occur on your property.

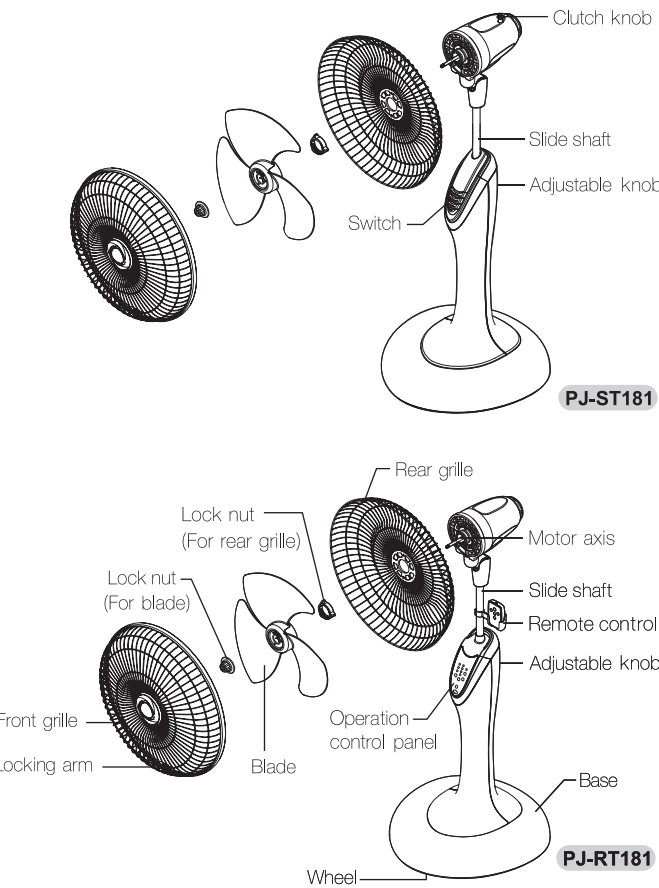
WARNING

- 1 If the electric fan is wrong operating, never repair by yourself. For safety and efficient use, contact your nearest service center approved by SHARP.
- 2 In case the power cord is broken, it must be replaced by SHARP service center to avoid any damages.
- 3 Unplug every time before start to clean the parts or when you do not use the electric fan anymore.
- 4 Do not immerse the electric fan in water or sprinkling water because this could lead to a short circuit or equipments broken.
- 5 Do not insert the finger or any objects through the grille while the blade is rotating.
- 6 Do not spray any vapor or chemicals to the electric fan while the blade is rotating.
- 7 Do not use the electric fan with incomplete or broken parts such as grille or blade, as it may cause injury.

CAUTIONS

- 1 Plug in tightly in order to avoid the plug to be overheated. This can cause the plastic to be melted, and conflagrated. When unplugging, hold only the plug part; do not pull the cable as this may cause the cable broken.
- 2 Never connect the plug with your wet hand as it may be dangerous from electric leakage.
- 3 Never share the wall outlet with other appliances.
- 4 Should not use the electric fan close to curtain, mosquito net or any objects which could be pulled to the motor, otherwise this may cause accident and damage.
- 5 Should not use the electric fan at the high temperature place such as placing it close to the stove or the high humidity place, as the unit might be damaged.
- 6 Should not place the electric fan on the hot or sloped floor, as the unit might be damaged.

DESCRIPTION OF PARTS

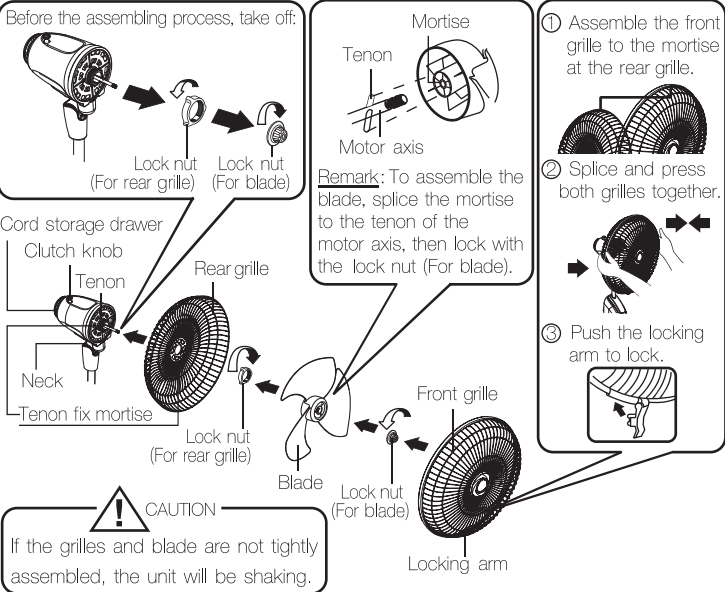


SPECIFIC INFORMATION

MODEL	PJ-ST181	PJ-RT181
Blade (mm.)	450	
Rated voltage (V)	220	
Rated frequency (Hz)	50	
Power consumption (W)	67	69
Rated current (A)	0.30	0.31
Insulation class	B	
Outside dimension (W x H x D) (mm.)	513x1,340-1,540x498	
Weight (kg)	8.6	8.8

*Detail is subject to change without prior notice.

BLADE AND GRILLE ASSEMBLING PROCESS



ASSEMBLING THE ELETRIC FAN

